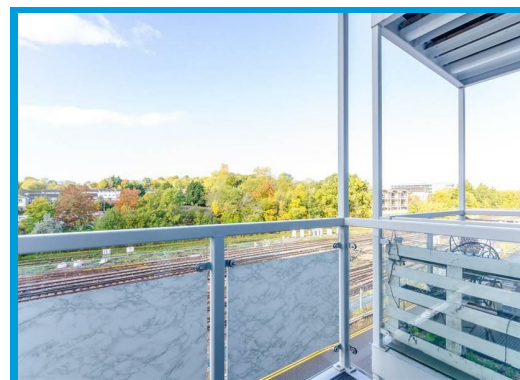
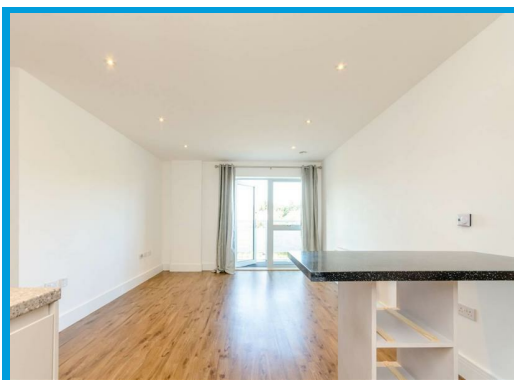
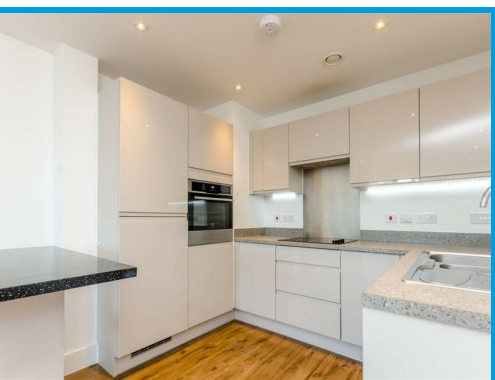




Station View, Guildford, GU1 4AR

£2,100 PCM

Accessed by lift, this stunning third floor two double bedroom apartment offers light and airy accommodation throughout. Situated moments from Guildford town centre and mainline station with secure underground parking.



Description

STUNNING RECENTLY BUILT DEVELOPMENT moments from Guildford mainline station. With two double bedrooms and a large lounge, the apartment offers light and airy accommodation throughout with secure underground parking.

The property is accessed through secure telephone system, hallway with access to large open plan reception room/ kitchen with appliances, also benefitting from two private under cover balconies.
Two double bedrooms, the master benefiting from ample built in wardrobes and en suite and a family bathroom with shower over bath.

The property is located moments from the mainline station, features secure underground parking and is accessed by lift.

